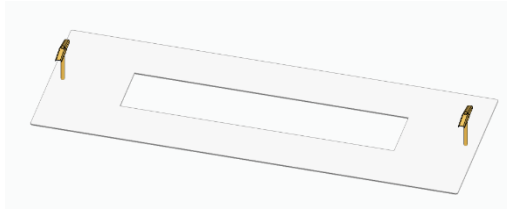




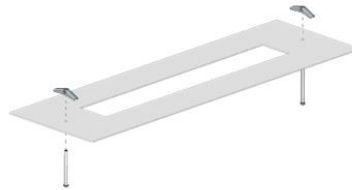
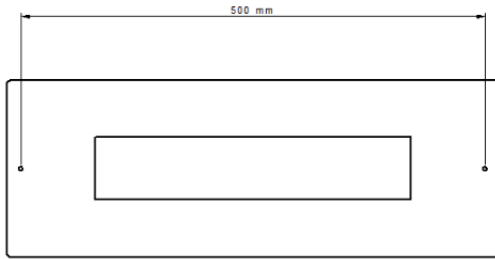
Glider Blade Exit

Glider Adaptor Cover Plate

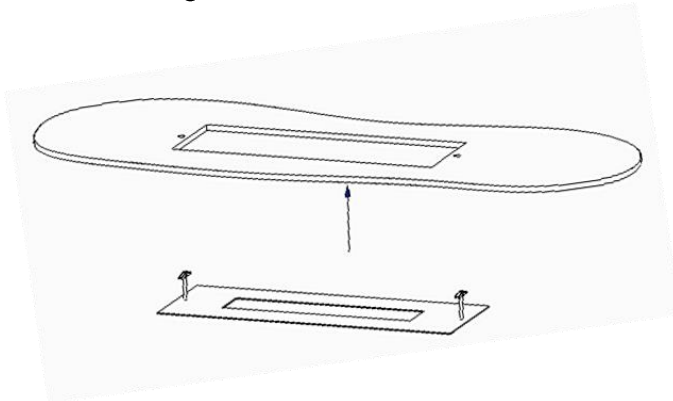


The adaptor cover plate is to be used when installing a Glider Exit as a recessed fitting and if the existing cutout is larger than 355mm x 85mm but smaller than 470mmx170mm.

1. Mark the holes on the Ceiling Tile using the provided adaptor cover plate.
2. If the existing cut-out is smaller than 345mm in length or 65mm in width, mark the cut-out on the Ceiling Tile using the provided adaptor cover plate and cut-out.
3. Drill the holes ($\varnothing 12\text{mm}$).
4. Insert spring toggle screws to the adaptor cover plate.



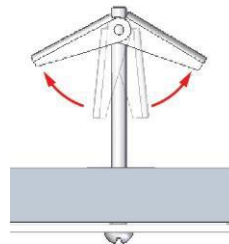
5. Insert the adaptor plate assembly into the ceiling via the cut-out and



align the adapter panel to match the holes that were drilled earlier.



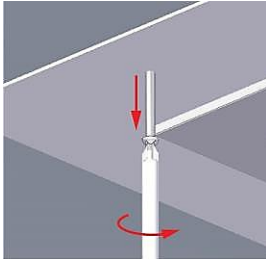
Compress spring toggle when inserting the adaptor plate



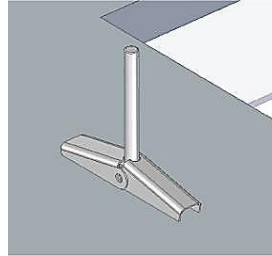
Spring toggle will extend out once pushed through ceiling tile



6. Fasten the adapter panel on to the ceiling tile.

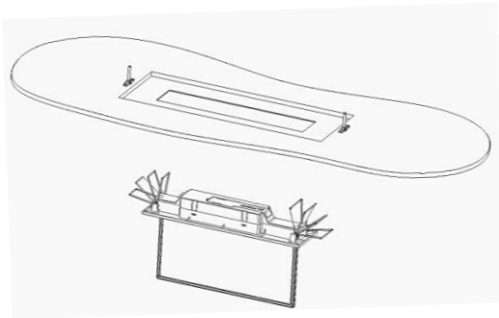


Compress spring toggle when inserting the adaptor plate



Spring toggle will extend out once pushed through ceiling tile

7. Fit the Glider to the adaptor plate



8. If cut-out hole is larger than 440mm in length, or the spring lifting force not strong enough to eliminate the gap between the cover adaptor with the Glider, use a plier and bend the Glider's mount springs 45° downwards at about 20mm measured from its outer flat end as shown below.

